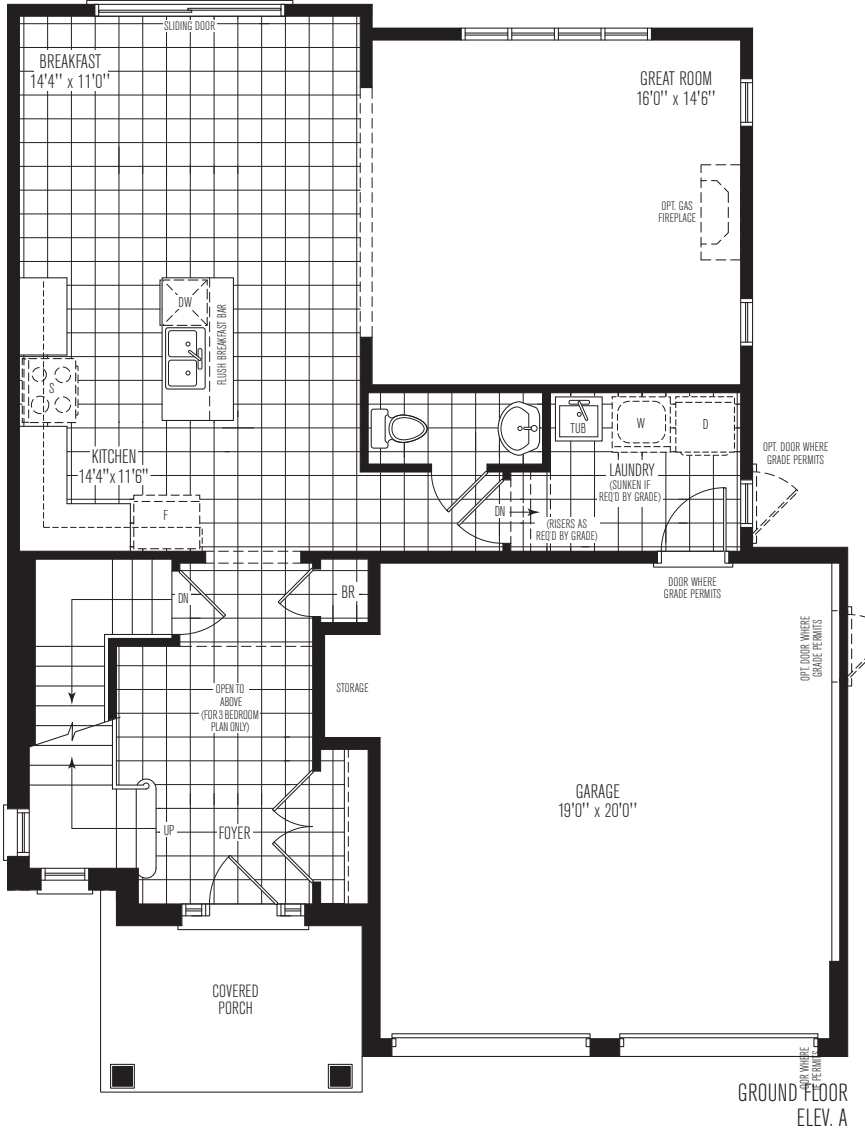


# THE KIRKFIELD

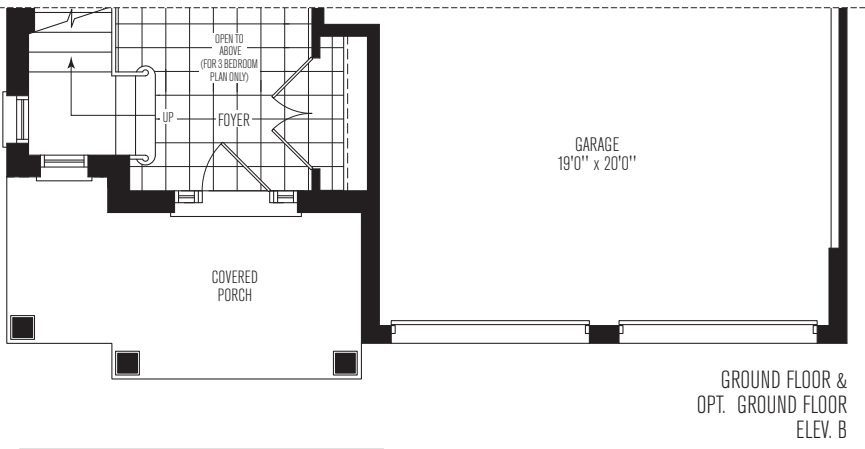
up to 2138 sq.ft.  
**TWO STOREY**



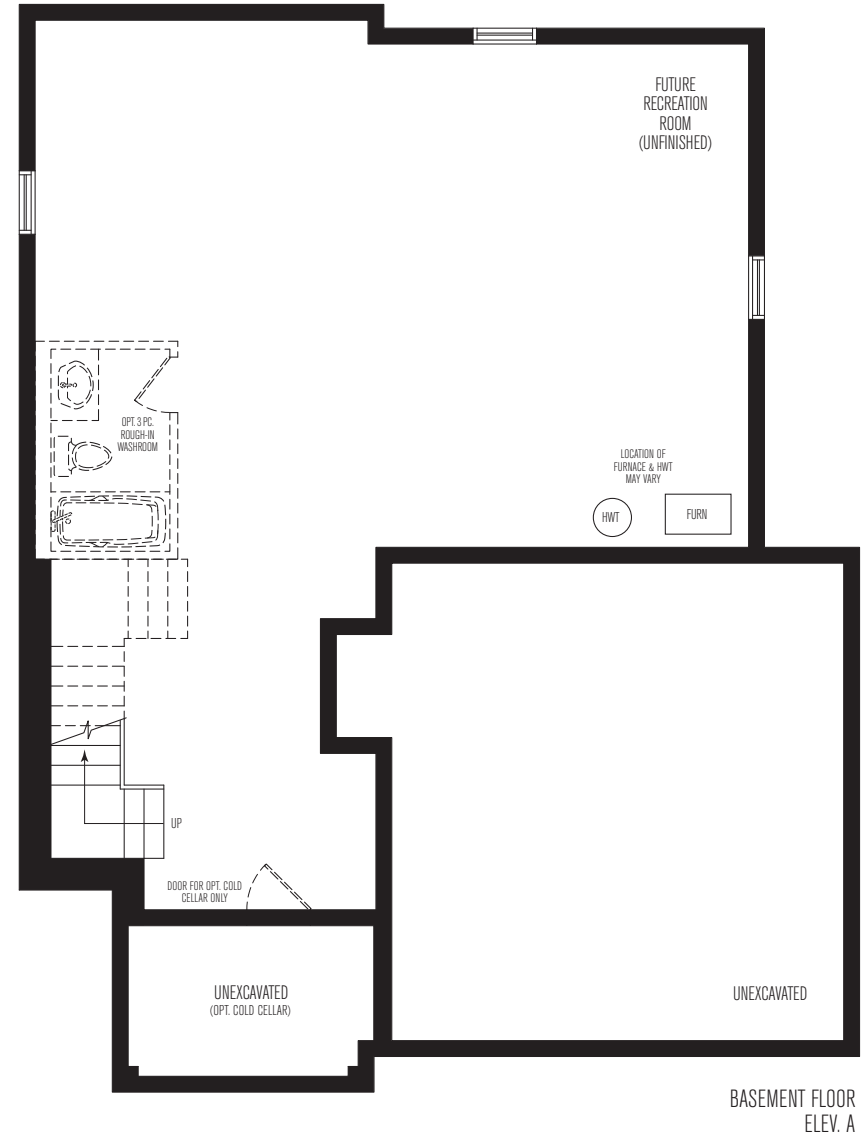
GROUND FLOOR  
ELEV. A



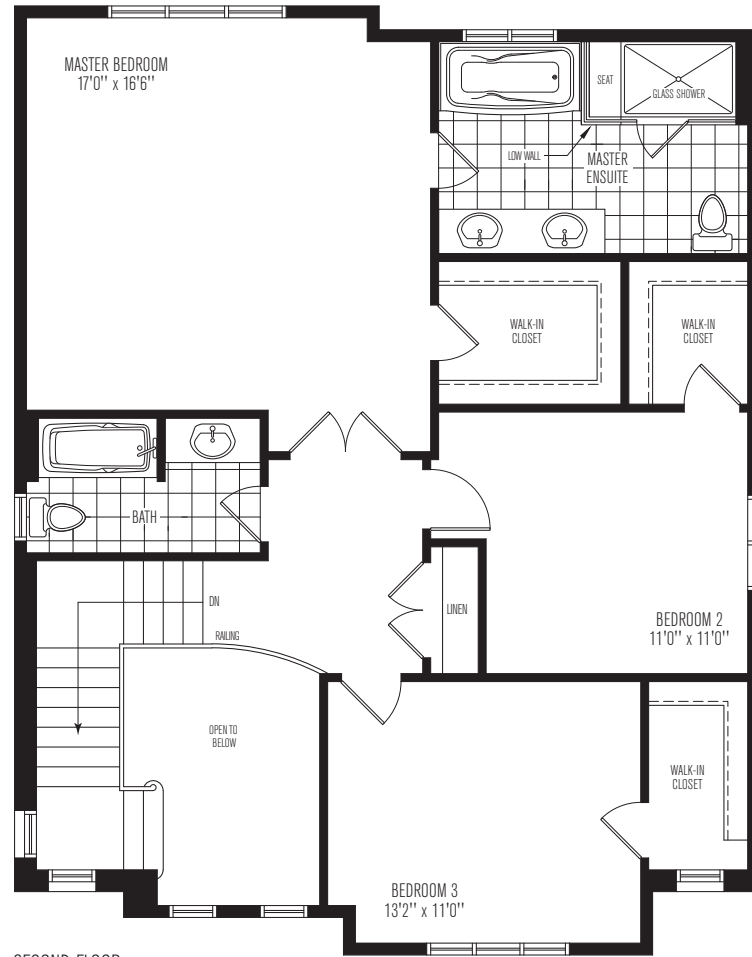
OPT. GROUND FLOOR  
ELEV. A



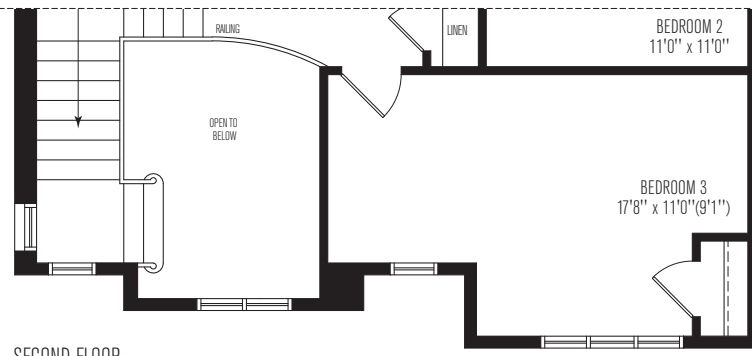
GROUND FLOOR &  
OPT. GROUND FLOOR  
ELEV. B



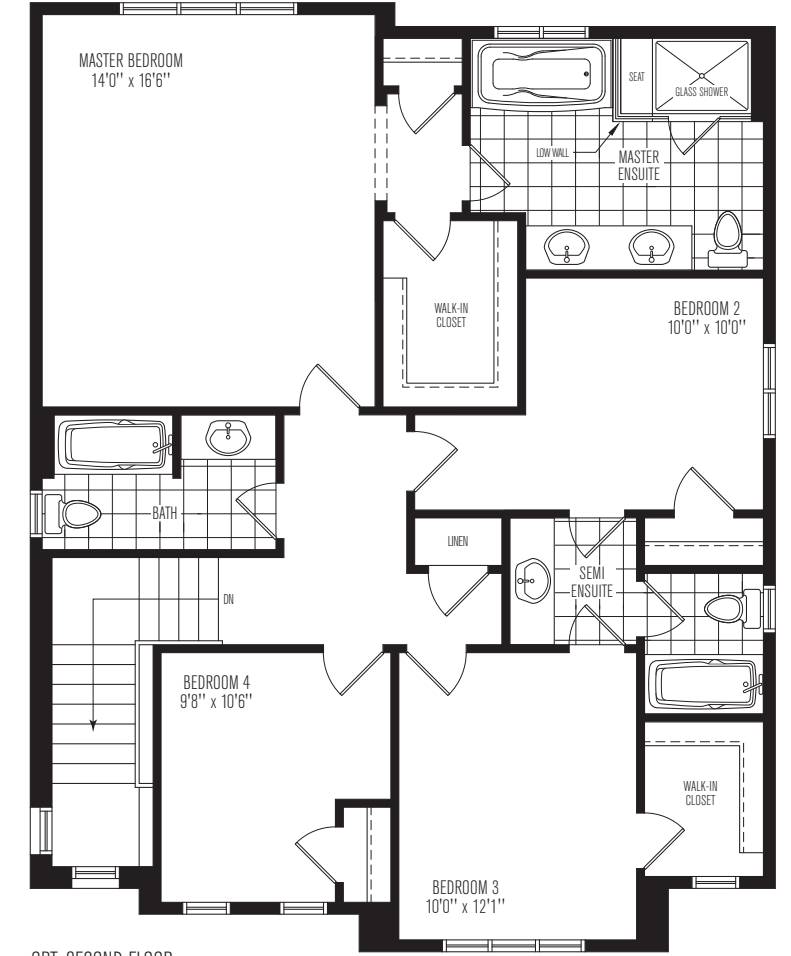
BASEMENT FLOOR  
ELEV. A



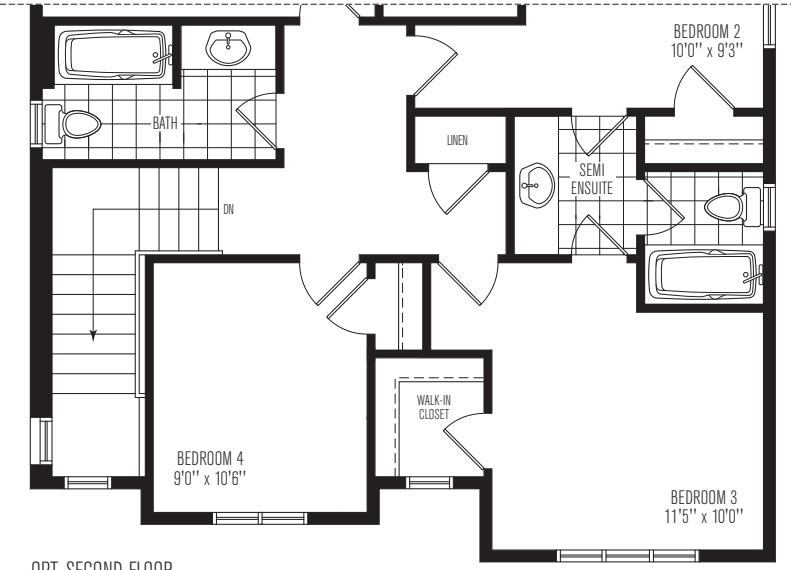
SECOND FLOOR  
3 BEDROOM  
ELEV. A



SECOND FLOOR  
3 BEDROOM  
ELEV. B



OPT. SECOND FLOOR  
4 BEDROOM  
ELEV. A



OPT. SECOND FLOOR  
4 BEDROOM  
ELEV. B



Elevation A / 3 bedroom - 2058 sq.ft.  
Elevation B / 3 bedroom - 2053 sq.ft.



Elevation A / 4 bedroom - 2138 sq.ft.  
Elevation B / 4 bedroom - 2134 sq.ft.

50-2

**ELM**  
DEVELOPMENTS

All measurements are calculated in accordance with industry accepted standards. Room dimensions, window configurations, number of steps and overall floor specifications may vary with final construction documents and site conditions. All specifications and materials are subject to change without notice. All illustrations are artist's concept. E & O.E., July 2018

**HIGHLAND GREEN**